

metadvice

Revolutionising Healthcare Economics
Unleashing the potential Precision Medicine with AI



[video](#)

The problem: Decision Overload To Apply Best Practice and Personalized Medicine



Solution: An AI Decision Engine Trained on Best Practice

Inputs

Guideline & updates

(NICE, UpToDate, NCCN, ECS)

Literature

(PubMed, Lancet, Blood)

Electronic Health Records

(Emis, Cerner, Epic, Fitbit, Garmin)

Comorbidities

(Cancer, diabetes, arthritis)

Neural networks taught
best practice knowledge
before training with data



Outputs

Diagnosis - Prognosis - Therapy

recommendations
justified with

Hyperlinks

(highlighting the relevant paragraph)

Similar patient outcome cohort

(same reasons lead to same conclusions)

Health and Therapy Forecasts for Hospitals, Payers and Pharma

1. Comorbid Clinical Companion ^{CE}

- Scaling to NHS primary care clinics in the UK
- Innosuisse with Inselspital DM2 outpatients
- Under development for CIS markets

2. Population Health Analytics

- Recall high risk patients (HMO)
- Cost reduction (insurance)

3. Real World Evidence Platform

- Clinical trial & marketing (pharma)

Hyperlinks to academic publications

Diabetes [EASD23](#), [EASD23](#), [ATTD24](#)

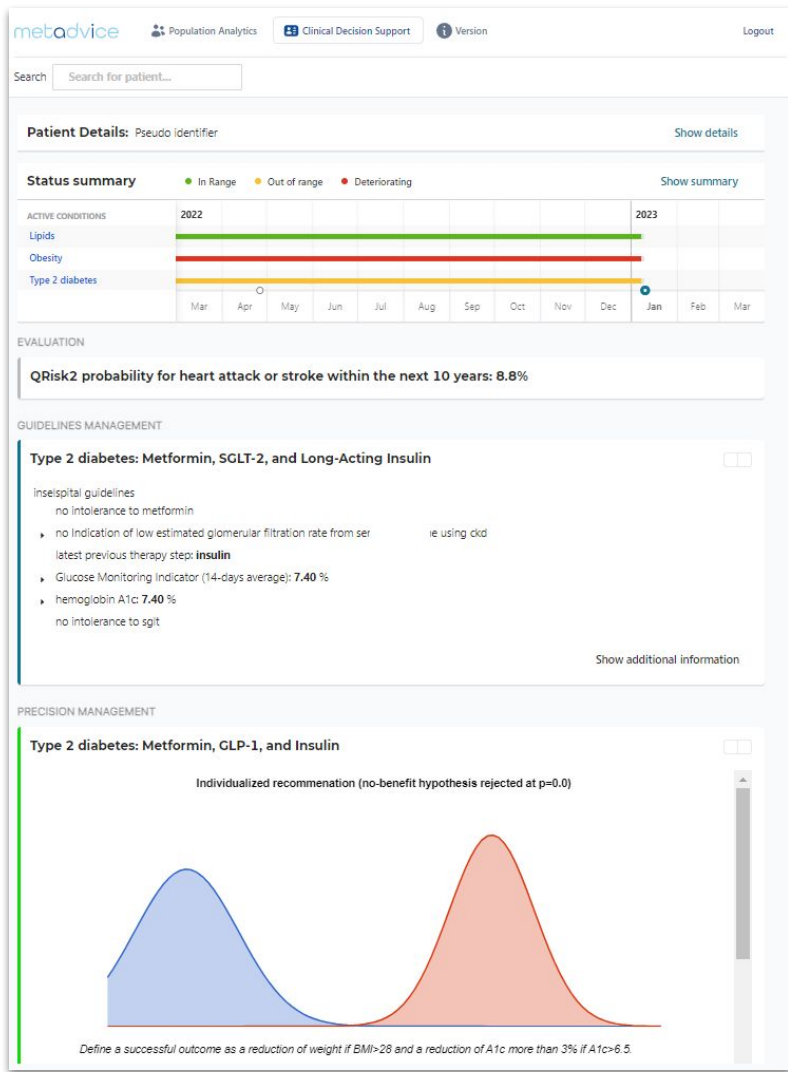
Lipids [HeartUK22](#), [EAS24](#),

Comorbidities [ADA23](#), [ADA24](#), [ESC24](#),

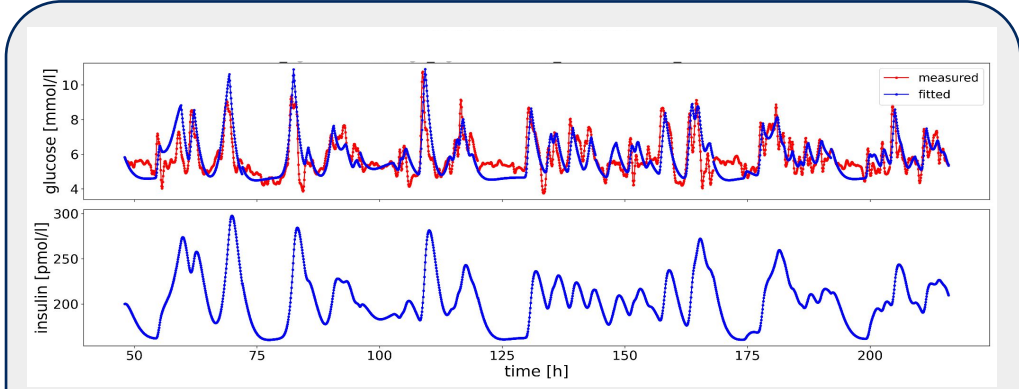
Rheuma [RMD23](#), Heme Oncology [ASH21](#),



[Click for Demo Video](#)



Use Case: CGM for DM2 Glucose + Weight Control



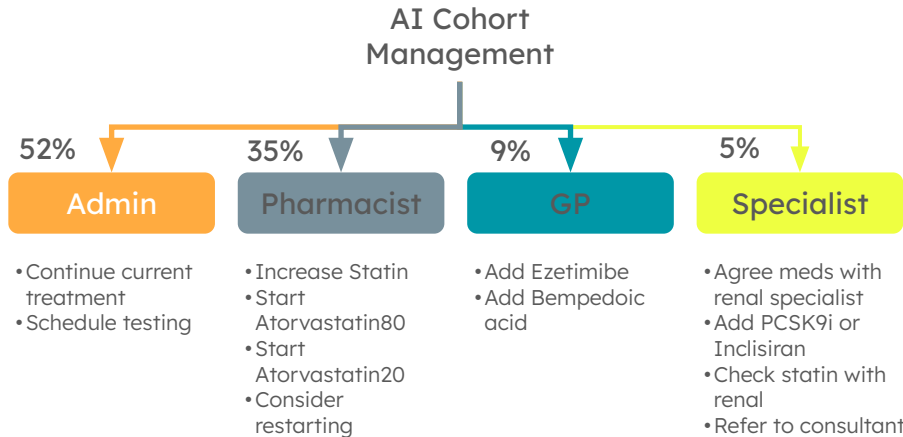
Continuous Glucose Monitoring. Indirectly measure insulin dynamics & resistance (Herzig, 2024)

Dual Optimization Management. Replace guidelines SGLT-2 with precision GLP-1 (Bally, 2024)

Case Study: Lancing PCN (NHS) using Metadvice for Lipid management

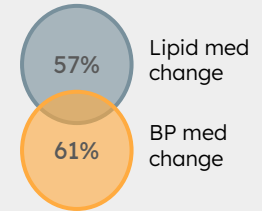
Risk-based Cohort Management Optimises Workflow and Practitioner Burden

- Stratify and segment interventions, and allocate to most appropriate HCP with individualized recommendation
- Maximises capacity and **reduces burden on GPs**
- Increases population that can be reviewed and effectively managed



Individualised Recommendations Drive Patient Outcomes

47%
patients were recommended treatment changes



Impact of Treatment Changes

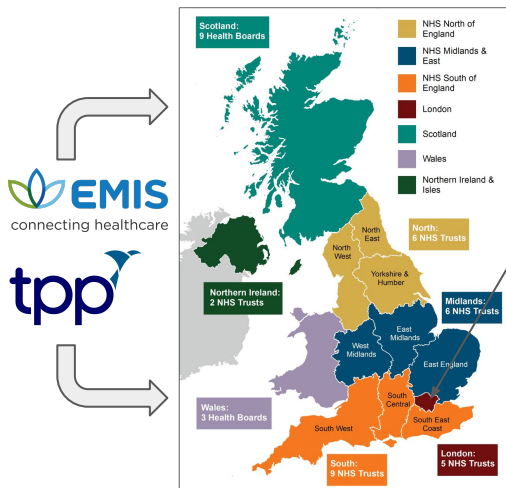
Treatment impact	90% patients had non-HDL reduction	78% patients had BP reduction
Average outcome	25% reduction in non-HDL	13% reduction in BP

*Based on 774 patients processed
Impact within 6 months. % changes are clinically significant
Point in time assessment; subset of patients with before & after data: Lipid 89, BP 50*

Metadvice's Go To Market Strategy

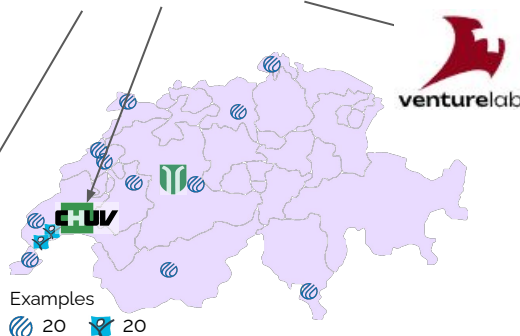
Moving from UK and Switzerland To US

Homogeneous EMR systems enable rapid cardiometabolic expansion to 80% of the NHS



"Scaling → 500k patients 1H25"

metadvice



HIN expansion to Swiss clinics, InnoSuisse project with Insel

"Precision medicine usability"

Expand via HMOs (spend millions on multi-morbidities) like NHS in the UK



"Target commercial model"

Technology – Metadvice versus Competitors

Unique in the competitive landscape

	Disease Area Coverage	Population Analytics	Clinical Decision Support	Precision Medicine	Multi-morbidity management
Oracle – Cerner	All	✓	X	X	X
Owkin	Cancer / Drug Discovery	X	✓	✓	X
Ronin	Cancer	X	✓	✓	X
Deontics	Unknown (?)	(?)	(?)	(?)	(?)
MetaOptima	Dermatology / Cancer	X	X	✓	X
Optum Health	All	X	✓	X	X
CloudMedX	All	✓	X	X	X
Metadvice	Chronic long-term conditions	✓	✓	✓	✓

Portable. General medical AI can be integrated with any locale through transfer learning.

Explainable. Comparison with guidelines, interpretability and statistical back-testing enables confident use of AI.

Comorbidities & Longevity. A holistic view can help to extend lifespan by personalising treatments.

Ready today. Precision medicine no longer “a decade away”.

Building a Team of Top-flight Precision Medicine, AI and Clinical Expertise



Prof Richard W Barker, OBE
Co-Founder, Member BoD



Serge Umansky, PhD, Dr.Sc.
Co-Founder, Member BoD



André Jaun, PhD, Docent
Co-Founder, CTO, Member BoD



Prof. Andrew Krentz
CMO, Head Cardiometabolic Diseases
Chair-Elect, Academic Board,
Royal Society of Medicine



Dr Jérôme Voegeli
MD Lead Expert Heme-Oncology
Volta medico-surgical center
La Chaux-de-Fond, Switzerland



Dr Jonathan Serjeant
MD, Head of UK Sales
GP, entrepreneur

Building a Team of Top-flight Precision Medicine, AI and Clinical Expertise



metadvice

Revolutionising Healthcare Economics
Unleashing the potential Precision Medicine with AI



Outstanding Global Data and Clinical Partners

Metadvice (Suisse) SA

Route Cantonale 109, 1025 St-Sulpice

Metadvice Ltd (UK)

45 Pall Mall, St. James's, London SW1Y 5JG

Metadvice Corp (USA)

JLABS, 3210 Merryfield Row, San Diego, CA 92121